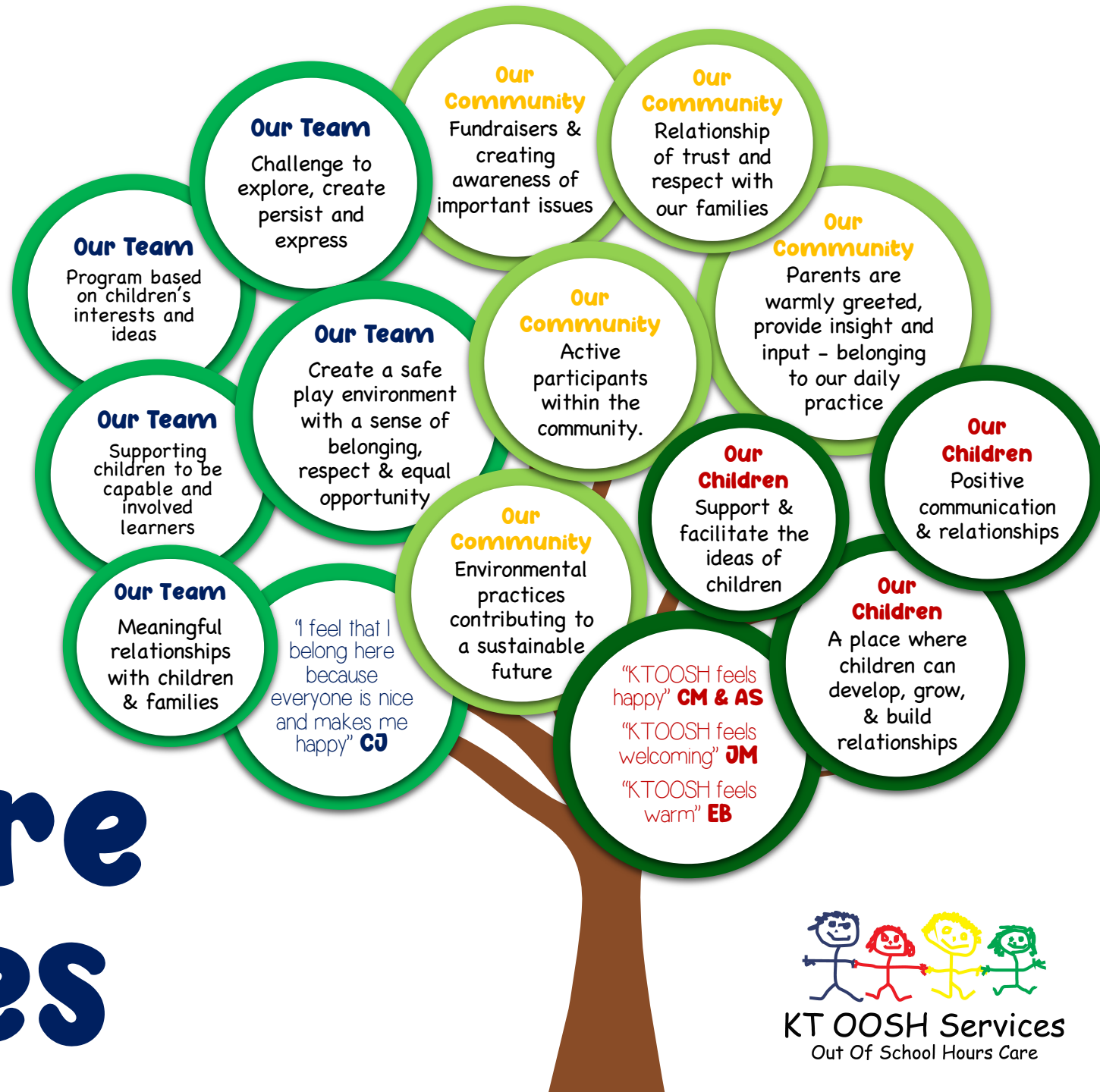


Our Centre Values



KT OOSH RHAC Centre Philosophy

Red = NQS LINKS

Green = Children's Voice

Our KT OOSH Team

Our team of educators at KT OOSH are passionate about forming meaningful relationships with the children and families that attend **5.1, 5.1.1, 6.1.**

We are passionate about supporting the role of learning through play and ensuring that the children are perceived as capable and involved learners **1.1.1.**

Our educators go above and beyond to ensure we create a program based on the children's interests and ideas and believe it's essential to provide the children with an opportunity to express their uniqueness and their voice **3.2.1.**

KT OOSH provides a safe play environment where we encourage a sense of belonging and believe all children should be treated with the same respect and have equal opportunities. The educators at KTOOSH encourage the children to take safe and appropriate risks, to challenge themselves and to persevere persist even when they find a task difficult, to explore, be creative and express their imagination. **5.1, 5.1.1.**

"I feel that I belong here because everyone is nice and makes me happy" CJ.

"Everyone is nice" AV

Our Commitment to the Community

KT OOSH strives to link ourselves to the community and to be active participants in as many ways as we can. KT OOSH supports fundraisers and believes it's important to raise awareness of important issues happening both in our community, the wider community and around Australia **1.1.2.**

We are committed to contributing towards a more sustainable future by participating in environmentally sustainable practices **3.2.3.**

We value families, their cultural beliefs and ways of being and doing as we strive to introduce and include opportunity to explore our community and the cultures within it **6.1.2, 5.1.2, 5.2.1.**

Our relationships with our families are built with trust and respect. We value our family's suggestions and thoughts, so that we can work towards maintaining and improving our quality.

Parents are treated and valued as a part of our daily practice. Our parents offer their input and valuable insight to their children, that ultimately increase our ability to create a safe and positive environment. Our families are greeted with a warm, welcoming smile and polite hello every day **6.1.3, 1.1.1, 6.1, 6.2.3.**

Our Commitment to the Children

At KT OOSH we endeavour in always putting the children first by facilitating their ideas and ensuring they are supported **1.1.2.**

"I feel respected because the educators listen to my ideas" GY.

The children have the opportunity to become a part of a safe play environment where they can develop, grow, build strong relations and find themselves as individuals **1.2.3, 3.2.**

"KT OOSH feels happy" CM & AS, "KT OOSH feels welcoming" JM, "KT OOSH feels warm" EB.

We recognise that each child has the right to participate in play, leisure opportunities and lifestyles that are culturally and creatively diverse. We establish and encourage positive communication and relationships between educators, children, families, schools and the community **3.2.1, 5.2.1, 5.2, 1.1.1.**

United Nations (UN) Rights for the Child Article 29 (goals of education)

"Children's education should develop each child's personality, talents and abilities to the fullest. It should encourage children to respect others, human rights, their own and other cultures. It should also help them to learn to live peacefully, protect the environment and respect other people".

The values of KT OOSH are underpinned by My Time Our Place Framework (MTOP), Early Years Learning Framework (EYLF & The National Quality Framework). We look at developing the child as a whole by linking their learning and environment to the frameworks Learning Outcomes, principles, and practices.